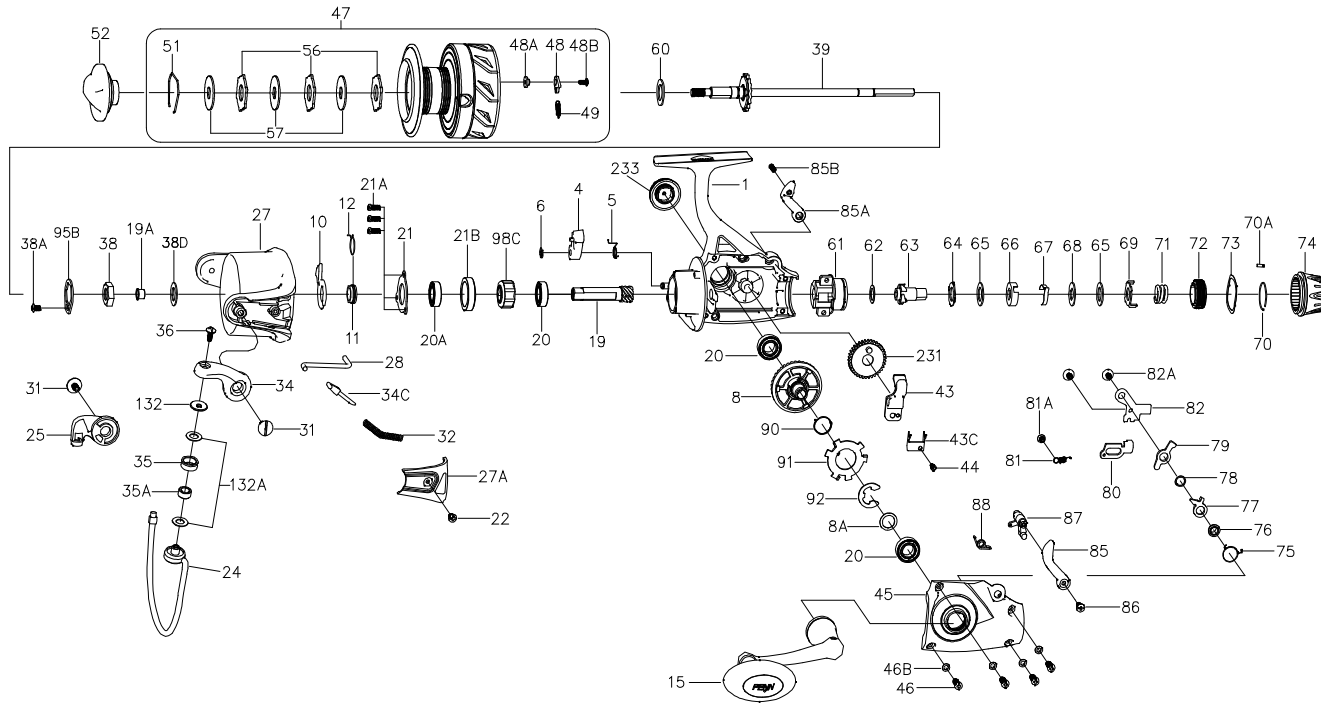




PARTS LIST FOR MODEL FRCIII6000LL



KEY NO.	PART NO.	PENN STYLE NO.	DESCRIPTION
46	1371701	46-FRCII6000LL	Housing Cover Screw (4 req)
46B	1191908	46B-5000SG	Housing Cover Washer (4 req)
47	1514352	47-FRCIII6000LL	Spool Assembly
48	1211625	48-5000SG	Click Tongue
48A	1211626	48A-5000SG	Click Tongue Washer
48B	1192658	22-2000SG	Bail Pivot Cover Screw
49	1211627	49-5000SG	Click Tongue Spring
51	1308112	51-CFT5000	Drag Retaining Ring
52	1514319	52-FRCIII5000	Drag Knob Assembly
56	1308114	56-CFT5000	Drag Washer (3 req)
57	1192044	57-5000SG	Keyed Washer (3 req)
60	1192062	60-5000SG	Thrust Washer
61	1371396	61-FRCII6000LL	Rear Drag Bracket
62	1371397	62-FRCII6000LL	Washer
63	1371398	63-FRCII6000LL	Ratchet
64	1371399	64-FRCII6000LL	Eared Washer
65	1371400	65-FRCII6000LL	Friction Washer (2 req)
66	1371401	66-FRCII6000LL	Click Spring Sleeve
67	1371402	67-FRCII6000LL	Click Spring
68	1371403	68-FRCII6000LL	Keyed Drag Washer
69	1371404	69-FRCII6000LL	Eared Washer
70	1371405	70-FRCII6000LL	Retaining Ring
70A	1371406	70A-FRCII6000LL	Click Pin
71	1371407	71-FRCII6000LL	Rear Drag Spring
72	1371408	72-FRCII6000LL	Drag Sleeve
73	1371409	73-FRCII6000LL	Spring Washer
74	1371410	74-FRCII6000LL	Rear Drag
75	1371372	75-FRCII4000LL	Release Pawl Spring
76	1371411	76-FRCII6000LL	Release Pawl Stud
77	1371412	77-FRCII6000LL	Release Pawl
78	1371413	78-FRCII6000LL	Washer
79	1371414	79-FRCII6000LL	Return Pawl
80	1371415	80-FRCII6000LL	N-R Pawl
81	1371376	81-FRCII4000LL	N-R Pawl Spring
81A	1324171	38A-BTLII4000	Rotor Locking Plate Screw
82	1371416	82-FRCII6000LL	Retaining Plate
82A	1371417	82A-FRCII6000LL	Screw (2 req)
85	1371379	85-FRCII4000LL	Left Lever
85A	1371380	85A-FRCII4000LL	Right Lever
85B	1371381	85B-FRCII4000LL	Screw
86	1251748	36-1000FRC	Bail Stud Screw
87	1371383	87-FRCII4000LL	Lever Bar
88	1371384	88-FRCII4000LL	Lever Spring
90	1371386	90-FRCII4000LL	Release Spring
91	1371419	91-FRCII6000LL	Release Plate
92	1371420	92-FRCII6000LL	Retaining Washer
95B	1308115	95B-CFT5000	Rotor Locking Plate
98C	1308116	98C-CFT5000	Clutch/Sleeve Assembly
132	1192297	132-5000SG	Roller Washer
132A	1192302	132A-3000SG	Line Roller Washer (2 req)
231	1200523	231-6000SG	Crosswind Gear
233	1514320	233-FRCIII5000	Bearing Cover Assy

407-FRCIII6000LL Rev. 0 19-2-2019

1505226

KEY NO.	PART NO.	PENN STYLE NO.	DESCRIPTION	KEY NO.	PART NO.	PENN STYLE NO.	DESCRIPTION
1	1514350	1-FRCIII6000LL	Housing Assembly	22	1204018	22-6000PUR	Bail Pivot Cover Screw
4	1190937	4-5000SG	Dog	24	1365746	24-FRCII6000	Bail Wire
5	1190966	5-5000SG	Dog Spring	25	1308093	25-CFT5000	Bail Holder
6	1190979	6-5000SG	Retaining Clip	27	1365747	27-FRCII6000	Rotor
8	1371390	8-FRCII6000LL	Main Gear	27A	1365748	27A-FRCII6000	Bail Pivot Cover
8A	1191030	8A-5000SG	Shim	28	1365749	28-FRCII6000	Trip Lever
10	1191066	10-5000SG	A/R Holder	31	1365740	31-FRCII5000	Bail Arm Screw (2 req)
11	1191085	11-5000SG	Bushing	32	1200520	32-6000SG	Bail Spring
12	1313865	12-CFT8000	A/R Bushing Spring	34	1308103	34-CFT6000	Bail Arm
15	1514321	15-FRCIII5000	Handle Assembly	34C	1191652	34C-5000SG	Pivot Arm
19	1364030	19-BTLII5000	Pinion Gear	35	1308066	35-CFT3000	Line Roller
19A	1191253	19A-5000SG	Pinion Bushing	35A	1308067	35A-CFT3000	Line Roller Bushing
20	1204012	20-5000PUR	Ball Bearing (3 req)	36	1191699	36-3000SG	Bail Stud Screw
20A	1308090	20-CFT5000	Upper Pinion Ball Bearing	38	1191729	38-5000SG	Rotor Nut
21	1192636	21-5000SG	Bearing Retainer	38A	1365741	38A-FRCII5000	Screw
21A	1192645	21A-5000SG	Bearing Retainer Screw (3 req)	38D	1308104	38D-CFT5000	Rotor Nut Washer
21B	1324209	21B-BTLII5000	Collar	39	1514351	39-FRCIII6000LL	Main Shaft
				43	1371392	43-FRCII6000LL	Crosswind Block
				43C	1371393	43C-FRCII6000LL	Main Shaft Holder
				44	1192644	21A-3000SG	Crosswind Block Screw
				45	1514573	45-FRCIII6000LL	Housing Cover Assy